

2024 Bike Duluth Festival
July 20

Enduro Map



All Stages
START HERE

Finish

Finish

Finish

Finish

Finish



**Viewing
Areas**

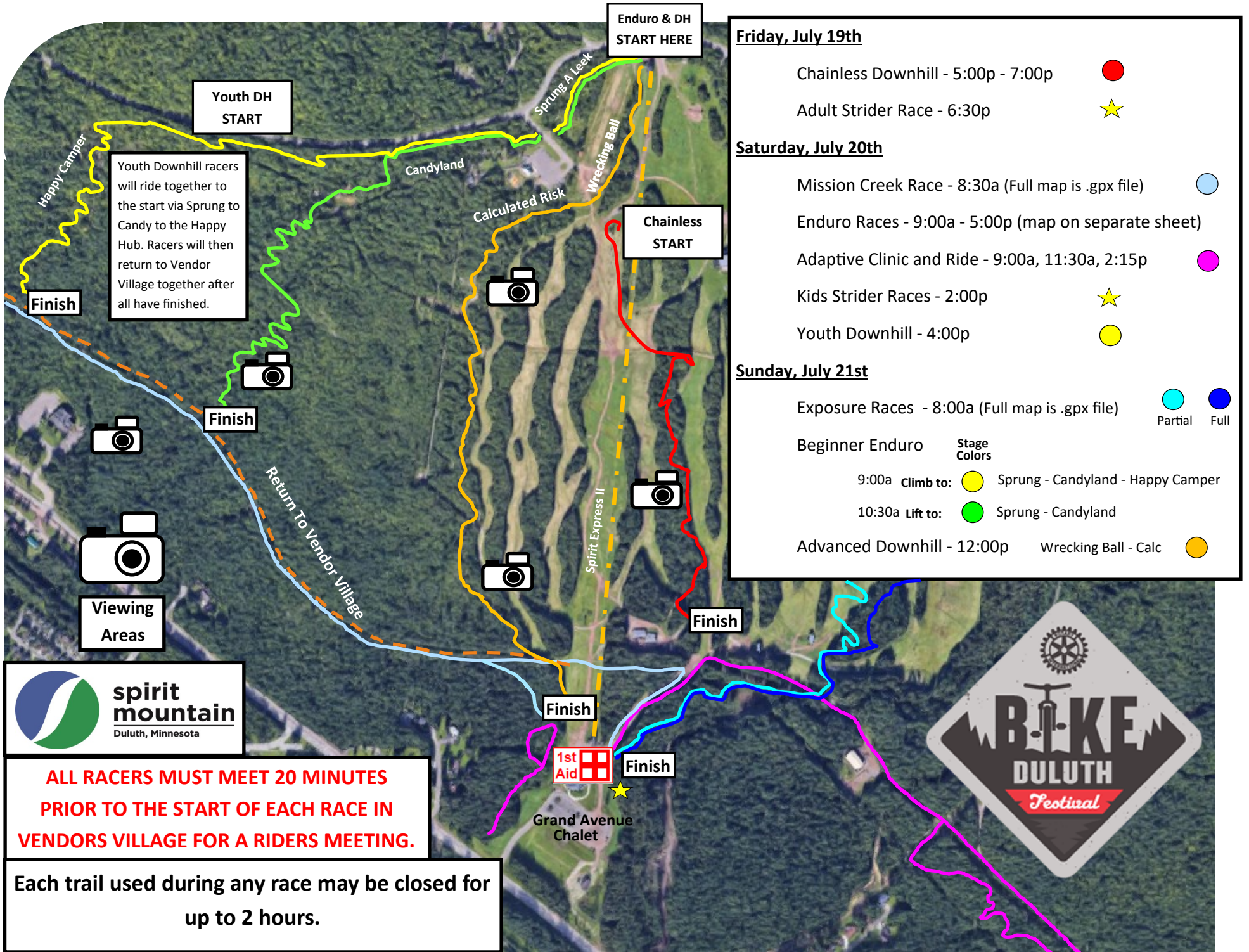
Enduro	Stage Colors	Trail Names
9:00a	ADV	Sprung - Candy - Boot - Steel Toe
	INT/ADV	Sprung - Candy - Happy Hub - Wild Cat - Boss Hog
10:30a	INT/ADV	Port Gitch - Smorg
	ADV	AWT - Greenman
	INT/ADV	Wrecking Ball - Anvil
1:00p	INT/ADV	AWT - Portage - Knowlton - Knowlton Rocks
	ADV	Sprung - Candy - Rock Candy - Rocky Roady

Advanced racers will be allowed 3 lift rides and Intermediate racers 2 lift rides.
When to use the lift is up to each racer and can be used at any time for any stage during the day. Racers must climb to the start for all other stages.

Stages will open at the time indicated. Race your open stages in any order during the time allowed.

Each climb must pedal on dashed white trail to start.





Youth DH START

Youth Downhill racers will ride together to the start via Sprung to Candy to the Happy Hub. Racers will then return to Vendor Village together after all have finished.

Enduro & DH START HERE

Chainless START

Finish

Finish

Finish

Finish

Finish



ALL RACERS MUST MEET 20 MINUTES PRIOR TO THE START OF EACH RACE IN VENDORS VILLAGE FOR A RIDERS MEETING.

Each trail used during any race may be closed for up to 2 hours.

- Friday, July 19th**
- Chainless Downhill - 5:00p - 7:00p ●
 - Adult Strider Race - 6:30p ★
- Saturday, July 20th**
- Mission Creek Race - 8:30a (Full map is .gpx file) ●
 - Enduro Races - 9:00a - 5:00p (map on separate sheet)
 - Adaptive Clinic and Ride - 9:00a, 11:30a, 2:15p ●
 - Kids Strider Races - 2:00p ★
 - Youth Downhill - 4:00p ●
- Sunday, July 21st**
- Exposure Races - 8:00a (Full map is .gpx file) ● ●
 - Beginner Enduro ● ●
 - Advanced Downhill - 12:00p ●
- Stage Colors**
- 9:00a **Climb to:** ● Sprung - Candyland - Happy Camper
 - 10:30a **Lift to:** ● Sprung - Candyland
- Partial Full**
- Partial
 - Full



Grand Avenue Chalet

Viewing Areas

Return To Vendor Village

Happy Camper

Candyland

Sprung A Leek

Wrecking Ball

Calculated Risk

Spirit Express II